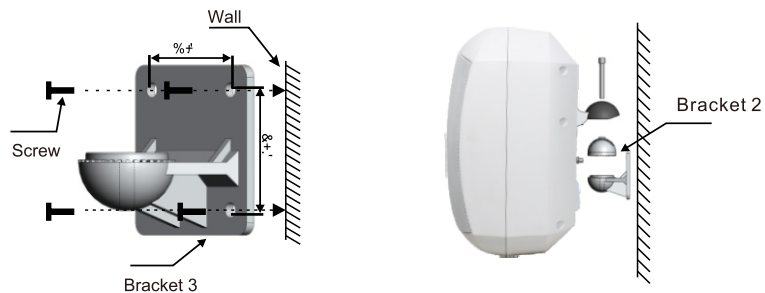
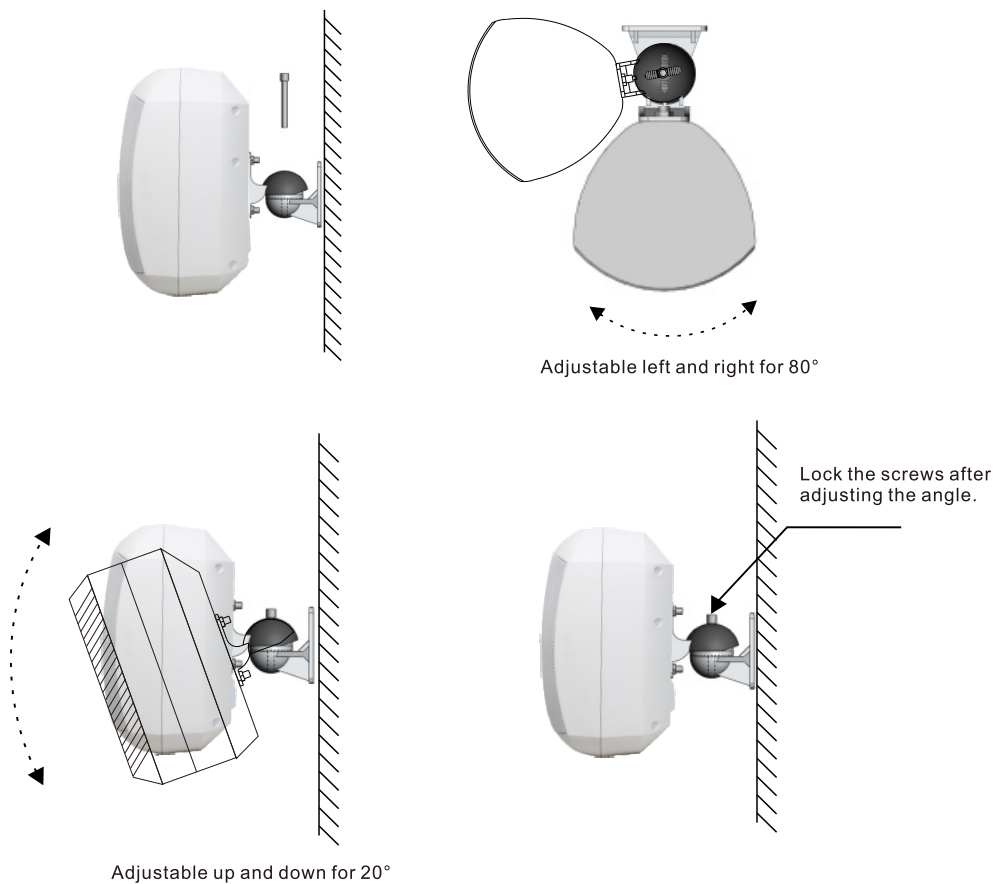


2. According to the installation plan, after drilling the hole position on the wall, the bracket 3 is fixed on the wall surface. Then the bracket 1, bracket 2, bracket 3 is assembled as shown. Make sure that the bracket is securely mounted (3 parts of the fastening bracket are supplied with screws.)



3. According to the installation plan in the adjustable range, adjust the most appropriate height, and then tighten the screws.



User's Manual



Indoor/Outdoor Wall Mount Speaker

Climate IP9 Pearl Climate IP9 Black



Specifications are subject to be changed without notice.



Features

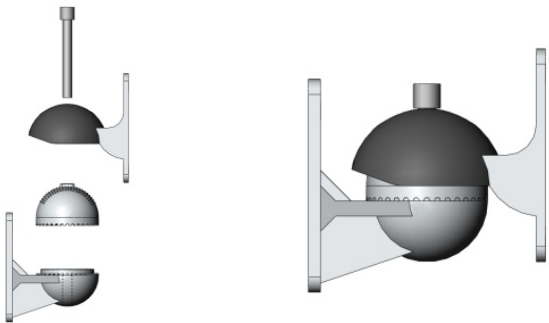
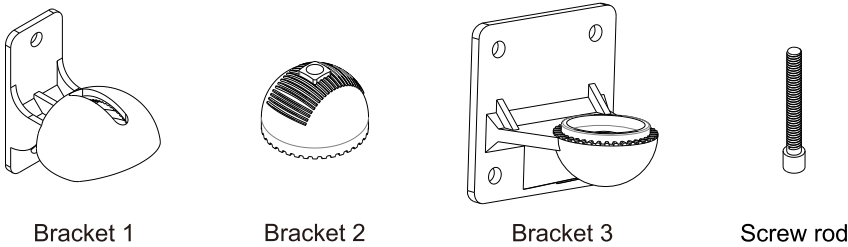
- ▶ All weather loudspeakers for music and speech.
- ▶ Stylish design with great sound
- ▶ IP66 waterproof finish for all extreme weather applications
- ▶ 8" weatherproof woofer and 1.5" silk tweeter
- ▶ 2-way speaker system
- ▶ PP Enclosure and 360-degree metal mounting bracket
- ▶ Power output 80W-40W-20W-OFF & 8Ω 100W
- ▶ 70V/100V speaker with power tapping or as a low impedance 8 Ohm speaker
- ▶ Supplied with 360° rotatable bracket for horizontal and vertical installation angle adjustment
- ▶ Black and white color optional

Specification

Model	Climate IP9 Pearl	Climate IP9 Black
Power Taps	20W/40W/80W/OFF-8ohm	
Power at 8ohm	100W	
Peak Power	160W	
SPL@ 1M	98±3dB	
Max SPL@ 1M	120dB	
Freq. Response	75-20KHz	
Dispersion Angel	Vertical: 80° and Horizontal: 100° (1KHz)	
Product Size	395x260x230mm	
Installation	Wall mount	
Enclosure Material	PP Enclosure and 360-degree metal mounting bracket	
Net Weight	4.9kg	
Color	White	Black
Speaker	8" weatherproof woofer and 1.5" silk tweeter	



Installation



Bracket Accessories

Split the mounting bracket into 1,2,3, three parts. Fit two six point screws into the mounting slot of the speaker's back (parallel to the wall speaker to help fit the screws

! When placing speakers horizontally, be careful not to touch and load the front of the speakernet with hard facing, otherwise it will deform the front net.

1. Fix the Bracket 1 as shown, tighten the screws according to the installation plan

